



# Riverside College

Widnes & Runcorn



# RIVERSIDE COLLEGE OF HIGHER EDUCATION



## STAY LOCAL GO FAR, WITH A HIGHER EDUCATION COURSE AT RIVERSIDE COLLEGE:

- 98% pass rates in 2011
- Excellent value for money - plus a bursary available to all students - £1,000 for full time degree students and £500 for part time degree students
- Small class sizes and award winning support
- Outstanding IQER (HE equivalent to Ofsted)
- Local venue, with tailored timetables to allow for part-time employment
- Gain a Higher Education qualification which will enhance your employability skills as well as your academic knowledge

Welcome to Riverside College of Higher Education .....	page 4
Why study your Higher Education course with us? .....	page 5
Award winning student support .....	page 7
Student Finances.....	page 8
How to apply .....	page 11
How to find us & getting to College .....	page 38

### Access to Higher Education:

- Access to Business .....
- Access to Nursing .....
- Access to Social Work .....
- Access to Teacher Training .....
- Access to Humanities .....

### School of Business:

- BA Hons in Business (Business and Management) .....
- HNC in Business (Business and Management) .....

### School of Creative Arts:

- Foundation Studies Art & Design Level 4 .....

### School of Early Years, Health & Social Care and Counselling:

- BA Hons Advanced Studies in Early Years .....
- HNC Advanced Studies in Early Years .....
- BA Hons in Health and Social Care .....
- HNC in Health and Social Care .....
- Foundation Degree in Counselling .....

### Centre of Sporting Excellence:

- BA Hons Sport (Coaching and Sports Development) .....

### School of Teacher Education:

- Preparing to Teach in the Lifelong Learning Sector (PTLLS) .....
- Certificate in Teaching in the Lifelong Learning Sector .....
- Diploma in Teaching in the Lifelong Learning Sector (DTLLS) .....

# WELCOME TO RIVERSIDE COLLEGE OF HIGHER EDUCATION

As a student at Riverside College of Higher Education we have a simple ambition: We want you to reach your potential during your valuable time with us.

If you are looking to take your education to the next level and become a graduate without the expense and upheaval of going away to do it. Or if you have already started your career and/or have family commitments and need a part time route to achieving your degree, then Riverside College could be right for you.

At Riverside College of Higher Education we are looking to support students to stay local and go far. To do this we have put together a range of full and part time courses and a package of support which includes a highly competitive bursary scheme.

In addition, with small class sizes and high levels of tutor contact on our courses, we offer exceptional value for money.

And that's not all. We have excellent facilities and have won awards for our student support, ensuring that we can help you to develop both academically and personally.

At the College we have a supportive and friendly atmosphere. I believe this comes from the strong relationships which exist between staff and students creating a college community where each person is valued and can flourish.

We are extremely proud of the service we provide to our community and I look forward to making you welcome at the College in September.



**Michael Sheehan**  
Principal

# WHY STUDY YOUR HIGHER EDUCATION COURSE WITH US?

THERE ARE SO MANY REASONS TO CHOOSE RIVERSIDE COLLEGE OF HIGHER EDUCATION. WE HAVE SELECTED WHAT WE THINK ARE THE MOST IMPORTANT HERE:

## 1. Top results and outstanding quality

- In 2011 we achieved an exceptional 98% pass rate in our HE courses
- We have been awarded the top marks available in our Higher Education inspection (QAA the Higher Education equivalent of Ofsted)
- Ofsted graded our Teacher Education as Outstanding grade 1

## 2. We offer excellent value for money by:

- Keeping our class sizes small so you get the individual attention you need
- Giving you high levels of contact time with your tutors so you get more in class support with your work
- Keeping our course fees extremely competitive
- Offering you a bursary scheme to help with living expenses
- Giving you the opportunity to study locally, staying at home and/or keeping your part time job to save on your living expenses



### 3. Award Winning Student Support



We aim to provide a truly caring environment for all of our students, and have scooped a top national award.

### 4. £3,000 or £2,000 bursary available to all students

All of our Higher Education students will be eligible for a bursary. For full time students this bursary is £1,000 per year (for 3 years) and for part time students it is £500 per year (for four years).

The bursary is money in your bank to help with living expenses, travel, books and any other course related costs.

### 5. Excellent links with Universities and employers:

At Riverside College of Higher Education we have strong relationships with universities, business and industry regionally, which is a tremendous benefit to our HE students.

We also have excellent partnerships with local universities and are proud to have courses validated by Edexcel, Liverpool John Moores University, Edge Hill University and Staffordshire University.

### 6. A natural progression from your Level 3 course

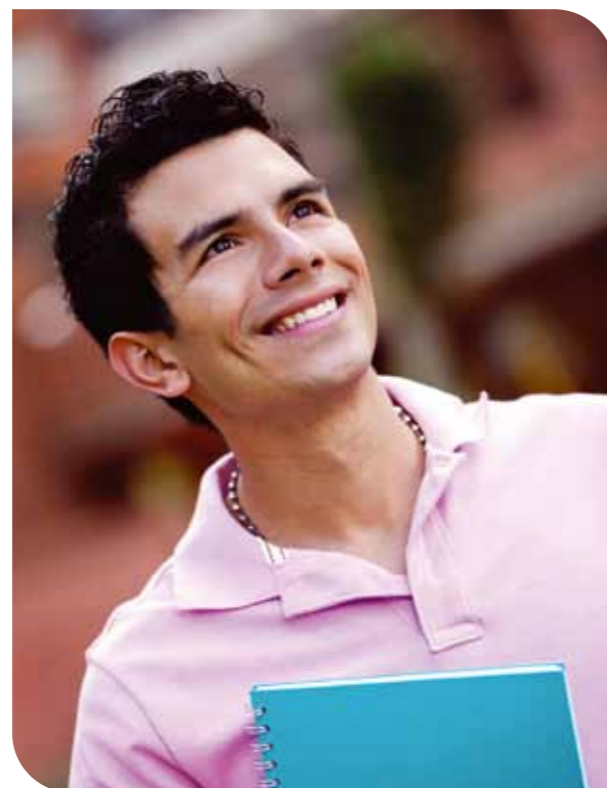
Many of the courses we are running offer a natural progression from our Level 3 A level and Vocational courses.

This means as a student at Sixth Form you may choose to stay on with the exceptional teachers you know, whilst staying at home and saving money.

### 7. Flexible course options to fit learning around your life

We also offer part time degrees and HNC options so that you can fit your higher education course into your already busy working schedule or family life.

We offer condensed timetables so that you are only in for 2 - 3 days per week and can therefore keep a part time or, with some courses, a full time job!



# SUPPORTING YOU TO REACH YOUR FULL POTENTIAL

Above all, we want you to be happy here and to achieve your full personal and academic potential. We have a great track record in supporting students and have been awarded the Matrix Excellence Award for outstanding guidance.

We sincerely hope that the experience you have here, both academically and socially, will stay with you as happy memories for the rest of your life.

#### Personal Tutor

When you join Riverside College of Higher Education you will be assigned a personal tutor. Your tutor will guide you through your course, support you through any difficult times and above all celebrate your successes.

Your personal tutor will help you to settle into college and carefully monitor your progress and help you with careers guidance, study skills, health issues and developing your progress file.

#### Professional Studies

Some careers demand that you have professional qualifications and experience in addition to your degree. You can participate in a wide range of activities to help you develop an understanding of your chosen career, such as work experience, volunteering, career related enrichment and employability workshops.

#### Study Support

If you experience any difficulties coping with your college work, or feel that you could do better with some extra help then we have a dedicated study support team to help you.

#### They can assist you with:

- organising and planning your work
- managing your time effectively
- arranging for extra workshops in skills such as English, Maths and IT
- developing your study skills to maximise your potential
- arranging specialist equipment e.g. software for students with dyslexia
- helping you with language skills if English is not your first language
- identifying and exploring your individual learning needs
- we also have a team of Tutors and Support Workers who work with students who have disabilities or learning difficulties / differences such as Dyslexia or Asperger's Syndrome.

#### Student Services

Your welfare is our priority and we will help you to overcome any obstacles to your success, achievement and progression.

#### We will help you with:

- job vacancies and employment opportunities
- managing your finances
- individual counselling for you if you have any personal difficulties
- advice on financial assistance available

# STUDENT FINANCES

Many students and their families are worried about the increased cost of undertaking a degree. However, **completing a higher education course will contribute to brighter employment prospects**, as well as helping you to gain the confidence and transferable skills needed for today's world of work.

Tuition fee loans, bursaries and grants all make gaining a degree much more affordable than you may think.

Riverside College of Higher Education supports students to access quality, local higher education in the most affordable way.

The table below details the duration of each course, if it is offered as a part time degree, full time degree and/or HNC, and the yearly tuition fee.

Course	Full Time Hons Degree (3 yrs) £4900 per year	Part Time Hons Degree (4 yrs) £3700 per year	HNC (2 yrs part time) £1200 per year
Health and Social Care	✓		✓
Advanced Studies in Early Years		✓	✓
Business	✓	✓	✓
Sport	✓		
Diploma in Teaching in the Lifelong Learning Sector (DTLLS)	2 year part time course, please enquire about prices		
Foundation Degree in Counselling	3 year part time course, please enquire about prices		



## WHAT SUPPORT IS AVAILABLE TO COVER THE COSTS OF STUDYING A HIGHER EDUCATION COURSE?

### Tuition fee loans

Loans are available for **all** first time undergraduates, full and part time. Once your application has been processed; tuition fees are automatically paid by the Student Loans Company. They cover the full tuition fee each year of the course.

A tuition fee loan is available to all first time undergraduates, on all full time and part time courses. This means you won't pay back any of your course fees until you are earning a minimum of £21,000 per year. Repayments start at £7.50 per month dependant upon what you earn.

The table below demonstrates the amount you would be paying per month (based on 2012 data):

Yearly salary:	Monthly repayment:
£15,000	Nothing
£16,000	Nothing
£21,000	Nothing
£22,000	£7.50
£30,000	£67.50
£40,000	£142.50
£50,000	£217.50



### National Scholarship Scheme and The College Bursary

Riverside College of Higher Education will be offering 3 students a fee discount of £3000 in their first year. To apply for this scholarship students need to complete an application form on the college website.

All students studying a full and part time degree at Riverside College of Higher Education are also entitled to a bursary for the duration of their course (3 years full time, 4 years part time).

- Full Time degree students £1000 per year
- Part Time degree students £500 per year

The bursary is money in your bank to help with living expenses, travel, books and any other course related costs.

The bursary will be paid each year of the course in three instalments.



## OTHER FINANCIAL SUPPORT AVAILABLE:

### Maintenance loans

Full-time students aged under the age of 60 at the start of their course can also take a loan to pay for their living costs, eg food, books, accommodation and travel. They are known as maintenance loans, and are usually paid in three termly installments direct to students' bank accounts.

### Maintenance grant

A maintenance grant is available to full time students, whose household income is under £42,600. If you are entitled to a full grant the maximum loan you will be entitled to is reduced.

### Disabled Students Allowances

DSAs are grants to help meet the extra course costs students can face as a result of a disability.

### Parents Learning Allowance/Childcare Grant

If you are a full-time student with children you may qualify for extra financial help on top of the standard student finance package. Depending on your circumstances, you may be able to get:

- the Childcare Grant (to help with childcare costs)
- the Parents' Learning Allowance (to help towards learning costs)
- Child Tax Credit

### The Adult Dependants' Grant

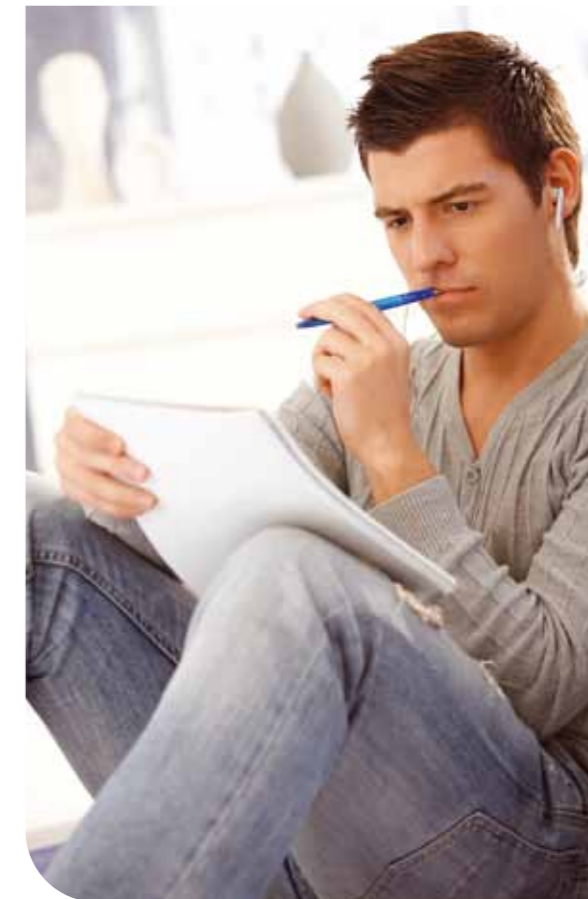
This could provide extra help if you are a full-time higher education student with an adult who depends on you financially.

## HOW TO APPLY

If you would like more information about a course you can look on the College website at [www.riversidecollege.ac.uk](http://www.riversidecollege.ac.uk) for a full course leaflet.

If you would like to speak to one of the Higher Education Team they will be able to answer your questions on courses and the financial assistance available for you. You can call them on **0151 257 2035**.

Scan this code into your Smartphone to take you directly to the Higher Education section of our website and a link to the application form.



## STEP BY STEP GUIDE:

### Step 1: Fill in an application form

You can apply online using the application form on the home page at [www.riverside.ac.uk](http://www.riverside.ac.uk) or by scanning the QR code above.

Alternatively, please use the application at the back of this brochure and return it to the FREEPOST address detailed on the bottom of the form, or drop it in to Riverside College reception.

### Step 2: Set a date

We will invite you in for an advice and guidance interview where you will have the opportunity to discuss the course you have chosen in more detail, and speak to our HE finance expert about which loans and grants you are eligible for and how to access them.

### Step 3: The offer

After the interview we will send you a formal offer of a place on the right course for you. We will ask that you confirm acceptance of this place as places on our HE courses are limited.

### Step 4: Enrolment

In August we will invite you in to complete your enrolment.

### Step 5: The Experience

In September your new course and life at Riverside College of Higher Education begins!





## ACCESS TO HIGHER EDUCATION

### STAFF PROFILE - KAREN ROSCORLA



Karen is an English lecturer on the Access to Higher Education course. She has a BA Hons in History and English, and has recently completed an M.A in Humanities at Liverpool Hope University. Karen's area of interest and research specialism is identity and how our environment and social conditioning can shape who we are. She also specialises in gothic narratives and brings this expertise to the Access to Humanities pathway at Riverside College.

Karen has taught at the college since 2003 where she has a proven track record of supporting students into higher education. Karen's own experiences achieving a first degree, and then a masters degree, while working and raising a family have given her an empathy that she brings to the Access to Higher Education programme.

## ACCESS TO HIGHER EDUCATION

The Access to Higher Education (HE) Diploma is a one year level 3 qualification which prepares you to study at University level. It is aimed at anyone who would like to progress to a Higher Education course but who does not have the traditional qualifications to do so.

At Riverside College of Higher Education we offer four pathways which can lead you directly onto one of our Higher Education courses.

### Access pathways are available in:

- Business
- Nursing
- Social Work
- Teacher Training
- Humanities

### Course Information:

On each of the pathways you will learn how to approach study and the different techniques that you will need to be a successful university student. The course takes only one year to complete and is therefore an intensive course which requires a high level of commitment.

To support you in your studies you will have a personal tutor who will help you to organise your workload and complete our 'HE toolkit' to support your university application.

We will also support you to undertake relevant work experience in the industry you have chosen in order to strengthen your university application. You will need to apply for university in the November of your course starting and therefore you will need to start to research your options over the summer.

### Entry Requirements:

There are no formal entry requirements; however you will be required to sit a skills test in English and maths to ensure that you are ready for the Access course. You will also need to attend an interview.

We also have FREE Pre Access to HE courses available that will develop your English and maths skills if you are not quite ready for the full Access to HE course. You will be given details of this course at your interview if it is right for you.

### Progression Opportunities:

We have excellent progression opportunities within Riverside College of Higher Education and you can see all of the courses we currently have on offer within this brochure.

Students also progress on to local universities including Liverpool John Moores University, Edge Hill University and University of Chester.

We will guide you through your application to university, helping you with the whole process.

We will also make sure that you are well prepared for the type and level of study on your chosen Higher Education course.

### How to Apply:

Access courses fill up fast so please apply as early as possible. You can apply online at [www.riversidecollege.ac.uk](http://www.riversidecollege.ac.uk) or by using the HE application form at the back of this brochure, please clearly state that you wish to study an Access course on your application.

For more information or advice please call the Admissions Team on 0151 257 2053. Once we receive your application our Admissions Team will contact you regarding the next step.





## SCHOOL OF BUSINESS

### TUTOR PROFILE - JACQUI SCOTT



#### Business Lecturer

Jacqui has achieved a Post Graduate Diploma in Advanced Educational Practice and is currently pursuing a Masters Dissertation on Higher Education in Further Education. She has been teaching within the Business Department at Riverside College since 1996 and as an outstanding teacher she holds the role of Business department subject learning coach. Her teaching career has focused predominantly on Business and Management Higher Education courses over the past 5 years. Jacqui is a dedicated teacher who strives to deliver an outstanding teaching and learning experience to all her students.

## SCHOOL OF BUSINESS

If you choose to study Business at Riverside College of Higher Education, you will be studying an innovative qualification that will put your skills and knowledge at the cutting edge.

You will be taught by highly qualified staff, with extensive experience in blue chip companies, even running successful international businesses. On both the degree and HNC course you will benefit from high profile speakers, real life briefs and the opportunity to develop skills that will lead to a wide variety of careers.

You can choose to study full or part time, and we welcome students with a variety of industry experience.

#### The School of Business will give you:

- 100% pass rate in 2011
- A long history of delivery of Higher Education courses
- Flexible course options to fit around your commitments
- Guest speakers such as ex student and Co founder of Paragon PE Ltd, Paul Ward who has turned down offers from the Dragons on the TV show Dragons Den twice
- Work placements and opportunities to work on real life briefs
- Extensive links with blue chip companies
- Outstanding teachers from a wide range of industry backgrounds

### STUDENT PROFILE - PAUL CRAVEN



**Achieved:** BA Hons in Business: 1st Class Honours

**Paul said** "I thoroughly enjoyed my time learning at Riverside college. It was extremely challenging and hard work, but it was made so much easier by the consistent support of teachers like Jacqui Scott who always encouraged me to do the best that I could and always had a kind and rewarding comment to make me try harder".

"The time and motivation was right for me, I had work experience that I could use and put to the test. It helped me understand the framework of my learning and fill in the gaps of what I didn't already know or understand".

"Initially I was worried I may not be capable of achieving the HNC, believing I may be out of my depth but in reality I found myself working with like minded people from a great variety of backgrounds. This helped me knowing I was not alone and the learning was to be achieved as a group - much more fun than learning alone from a distance at home".

"The subject was always interesting, the teachers always encouraging and energetic, the goal always challenging but ultimately extremely rewarding and powerful. It gave me great confidence and made me realise that I have nothing to be afraid of and if I wanted to I could achieve anything!"

## BA HONS BUSINESS (BUSINESS AND MANAGEMENT)

**Duration:** 3 years full time or 4 years part time

**Location:** Kingsway Centre

### What is this course about?

The BA Hons Business is an innovative degree designed to equip people with the relevant knowledge and skills for the modern business.

It is ideal for anyone wishing to pursue a career in any form of business management or to progress onto professional qualifications such as Marketing, Accountancy or Human Resources.

On the BA (Hons) in Business (Business and Management), the broad field of business studies are introduced and the business environment and organisations and behaviour are examined. Alongside the academic and practical aspects of the course, students will have opportunities to apply their knowledge and practical skills in the workplace, either through work placement or through employment.

The Edexcel BTEC Level 5 HND in Business forms the first two years of the programme and is followed by a one year full time top up to an Honours Degree, awarded by Edexcel.

The course will follow a specialist business and management pathway which will enable you to explore and develop your management potential. This pathway will be of interest to both current and aspiring managers. Your teaching and learning will involve case study analysis, research into current business trends, group work, team presentations and active learning where you are fully engaged with the learning process.

### Why choose Riverside for the Course?

- A long track record of outstanding achievement on Higher Education courses
- Extensive links with local, national and international business
- Master Classes and workshops delivered by external business experts and entrepreneurs
- Excellent breadth of postgraduate qualifications and industry experience within the department
- Outstanding teaching and learning within the department

### What are the entry requirements?

- Successful completion of a level 3 qualification e.g. National Award and/or A levels which meet a minimum level of 80 UCAS points.
- Maths or English GCSE at Grade C (or equivalent)
- Mature candidates will also be considered on an individual basis

### What will this course lead on to?

This course will prepare students for employment in a range of occupations in a variety of fields including human resources, marketing, finance, accounts and administration.



## HNC BUSINESS (BUSINESS AND MANAGEMENT)

**Duration:** 2 years part time

**Location:** Kingsway Centre

### What is this course about?

The HNC Business is an innovative level 4 course, designed to equip people with the relevant knowledge and skills for the modern business.

It is ideal for anyone wishing to pursue a career in any form of business management or to progress onto professional qualifications such as marketing, accountancy or Human Resources or to the BA Hons in Business. The HNC Business introduces the broad field of business studies and the business environment and organisations and behaviour are examined.

The course will follow a specialist business and management pathway which will enable you to explore and develop your management potential. This pathway will be of interest to both current and aspiring managers. Your teaching and learning will involve case study analysis, research into current business trends, group work, team presentations and active learning where you are fully engaged with the learning process. You will be supported by an experienced HE team who are committed to providing an outstanding teaching and learning experience.

### Why choose Riverside for the Course?

- A long track record of outstanding achievement on Higher Education courses
- Extensive links with local, national and international business
- Master Classes and workshops delivered by external business experts and entrepreneurs
- Excellent breadth of postgraduate qualifications and industry experience within the department
- Outstanding teaching and learning within the department

### What are the entry requirements?

Full level 2 qualification e.g. BTEC Diploma or 5 GCSEs including Maths or English GCSE at grade C (or equivalent). Mature students with relevant commercial experience will be eligible.

### What will this course lead on to?

This course will prepare students for employment in a range of occupations in a variety of fields including human resources, marketing, finance, accounts and administration.

## STUDENT PROFILE - ROSANNE BOND



**From:** Widnes

Rosanne has studied hairdressing and a business degree at Riverside. She currently runs her own hairdressing business and is training to teach both hairdressing and business at college.

**Quote** "During my time at Riverside I have received lots of support from my tutors who have always inspired me and helped me to continue with my studies. I enjoyed my time studying towards my Business degree at Riverside as there was a lot of one to one support and as the college is local it was really easy to get to. My goal is to finish my qualifications in teaching and teach business and hairdressing at college."



## SCHOOL OF CREATIVE ARTS

### TUTOR PROFILE - MARK SMITH



#### Programme Area Leader for Creative Arts

- Mark has an MA in Design.
- He is highly experienced in course delivery across a wide range of art & design courses.
- Mark has exhibited as a video artist and documentary film-maker in prestigious national art events such as the 'Cyfuniad,' an international arts workshop hosted by the Triangle Arts Trust, The Liverpool Biennial of Contemporary Arts International and the 'Live Culture' performance art symposium at Tate Modern in London.
- Mark also works for Cambridge University and the European Council for International Schools as a professional development examiner and trainer for teachers working in high-profile international schools around the world.

## SCHOOL OF CREATIVE ARTS

The School of Creative Arts at Cronton Sixth Form College offers the Level 4 Foundation Diploma in Art and Design. This course is designed to allow students to develop their creative skills and a portfolio which will give entry to BA Hons Degrees at the top universities.

By joining the School of Creative arts you will be accessing outstanding facilities and outstanding teachers who have developed a highly creative environment within the art and design studios and workshops at Cronton Sixth Form College.

Students get the chance to study in a modern open plan creative environment which includes:

- Art studio specifically designed to capture natural light
- Fully equipped textile area
- Computer suite equipped with the latest Adobe creative software
- Industry standard dark room facility
- Teaching support throughout the day during self directed study time
- All staff are highly skilled and offer a diverse range of specialisms
- All staff are practicing artists

## FOUNDATION STUDIES (ART & DESIGN)

**Duration:** 1 year full time

**Location:** Cronton

#### What is this course about?

This is one of the best qualifications someone pursuing a career in the creative industries can do. It is a diagnostic course, designed to help students experience a wide range of Art & Design disciplines and then go on to develop a strong portfolio in their chosen field. Once you have sampled the variety you can make an informed choice as to your specialisation and will then be guided through the UCAS system to progress to the right degree and course for you. Nearly all Art and Design Degree courses require this qualification in addition to A Levels as it guarantees a more accurate choice and offers them more mature and creative students.

#### Why choose this course?

You will be taught by tutors who are working artists and continue in the success of our year on year 100% pass rate. Students go onto to study at the best university courses in the country.

#### Entry requirements:

You need to have passed a full A-Level in Art, Textiles or Photography or gained a Merit on an Extended Diploma Level 3 Art and Design related course.

#### What will this course lead on to?

Based on your portfolio and interview you will progress onto a degree in the arts. You also have the opportunity to apply for jobs in related creative industries.



## SCHOOL OF HEALTH & SOCIAL CARE, EARLY YEARS & COUNSELLING

### SCHOOL OF HEALTH & SOCIAL CARE, EARLY YEARS & COUNSELLING

By enrolling on a course in the School of Health and Social Care, Early Years and Counselling you will be choosing to study a sector that is seeing significant growth and offering countless opportunities for successful careers.

The department has a long reputation of delivering successful Higher Education courses, extensive links with local and regional employers and outstanding, exceptionally highly qualified staff.

The School of Health and Social Care, Early Years and Counselling gives you:

- 100% pass rates on vocational programmes
- Published Lecturers
- Links with over 200 local and regional employers
- Exceptional progression opportunities
- An annual care conference held at Riverside College of Higher Education with prestigious and industry leading, key-note speakers
- Courses which will prepare you both academically and practically for a career in this growing sector

### BA HONS ADVANCED STUDIES IN EARLY YEARS

**Duration:** 4 years part time

**Location:** Kingsway Centre

#### What is this course about?

The Edexcel Honours Degree in Advanced Studies in Early Years has been developed with career progression and recognition by professional bodies in mind.

The Edexcel Honours Degree in Advanced Studies in Early Years underpins the National Occupational Standards in the Advanced Studies in Early Years sector at level 4. Alongside the academic and practical aspects of the course, students will have opportunities to apply their knowledge in the workplace, either through work placement or through employment.

The Edexcel BTEC Level 5 HND in Advanced Studies in Early Years forms the first two and a half years of the programme and is followed by an eighteen month, full-time top up to an Honours Degree, also awarded by Edexcel.

The course provides a specialist vocational programme, linked to professional requirements with core subjects in continuing development, communication, values and leadership in an early years environment. Theories of development from birth to three, the early years curriculum, play and learning, theories of development - three plus and an understanding of children's behaviour and safeguarding are also covered.

#### Why choose Riverside for the Course

- Outstanding teaching and learning within the department
- Outstanding added value on early years courses
- Outstanding achievement across all BTEC programmes
- Extensive use of private, public and voluntary sector settings
- Strong links with employers enhance vocational experience
- Wide range of guest speakers who provide current, relevant and inspirational advice for careers progression

- Annual Care Conference held at Riverside College of Higher Education with prestigious and industry leading, key-note speakers
- Excellent breadth of post-graduate qualifications and sector experience within teaching team
- Enhancement of employability skills and knowledge

#### What are the entry requirements?

- Successful completion of a level 3 qualification e.g. National Award and/or A levels which meet a minimum level of 80 UCAS points.
- Maths or English GCSE at Grade C (or equivalent)
- Candidates will be considered on an individual basis and those with work experience will also be considered

#### What will this course lead on to?

This Early Years course is an excellent foundation for a range of careers working with children and young people.

Early Years has a natural link with work in the social care and education sectors and many graduates will opt to stay within these sectors after graduation. Examples of the types of jobs childhood studies students have entered include: child and family support managers, residential child care officers, classroom/education assistants, kid's club coordinators, charity development/project officers, outreach support workers, further education tutors and nursery officers.

You can also apply for a PGCE in Primary Teaching, however you would require to have gained a 1st or 2:1 degree, have your English, Math's and Science GCSE and some relevant experience and knowledge of working within a educational setting.

## HNC ADVANCED STUDIES IN EARLY YEARS

**Duration:** 2 years part time

**Location:** Kingsway Centre

### What is this course about?

The Edexcel HNC Advanced Studies in Early Years has been developed with career progression and recognition by professional bodies in mind.

The Edexcel HNC Advanced Studies in Early Years underpins the National Occupational Standards in the Advanced Studies in Early Years sector at level 4. Alongside the academic and practical aspects of the course, students will have opportunities to apply their knowledge in the workplace, either through work placement or through employment.

The course provides a specialist vocational programme, linked to professional requirements with core subjects in continuing development, communication, values and leadership in an Early Years environment, theories of development from birth to three, the early years curriculum, play and learning, theories of development - three plus, understanding children's behaviour and safe guarding.

### Why choose Riverside for the Course?

- Outstanding teaching and learning within the department
- Outstanding added value on early years courses
- Outstanding achievement across all BTEC programmes
- Extensive use of private, public and voluntary sector settings
- Strong links with employers enhance vocational experience
- Wide range of guest speakers who provide current, relevant and inspirational advice for careers progression
- Annual Care Conference held at Riverside College of Higher Education with prestigious and industry leading, key-note speakers
- Excellent breadth of post-graduate qualifications and sector experience within teaching team
- Enhancement of employability skills and knowledge

### What are the entry requirements?

Full level 2 qualification e.g. BTEC Diploma or 5 GCSEs including Maths or English GCSE at grade C (or equivalent). Mature students with relevant commercial experience will be eligible.

### What will this course lead on to?

This Early Years course is an excellent foundation for a range of careers working with children and young people. There are opportunities to enter a wide range of careers that are not related to your HNC subject.

Early Years has a natural link with work in the social care and education sectors and many graduates will opt to stay within these sectors after graduation. Examples of the types of jobs childhood studies students have entered include: child and family support managers, residential child care officers, classroom/ education assistants, kid's club coordinators, charity development/project officers, outreach support workers, further education tutors and nursery officers.

You can apply for a HND or degree top up programme in Health and Social Care.



## TUTOR PROFILE - CONTROLLAH GABI



### Health and Social Care Lecturer

Contie is a lecturer on the Health and Social Care higher education courses. After qualifying as a primary school teacher, he spent the first six years of his teaching career in Zimbabwe. During this time he held posts of senior teacher, head of department and deputy headteacher.

His profound passion for education has seen him serve as governor at Ringway Primary School for three years. He has also been a graduate teaching assistant at the University of Manchester. Contie has studied at the Manchester Metropolitan University (BA Hons, BICT Education with QTS), The University of Manchester (MSc, Educational Research), Azaliah University (Bachelor of Business Administration), the University of Zimbabwe (Diploma in Primary Education), Institute of Marketing Management (Certificate in Marketing Management).

He is completing his PhD, Education at the University of Manchester in the next two months. Over the years, Contie has developed a passion for research. He is a member of the American Educational Research Association (AERA), the British Educational Research Association (BERA), the Chartered Institute of Personnel and Development (CIPD), **The Institute for Learning** (IfL) and the General Teaching Council for England (GTCE). He has presented and has had published well-received research papers.

## BA HONS HEALTH AND SOCIAL CARE

**Duration:** 3 years full time

**Location:** Kingsway Centre

### What is this course about?

The Edexcel Honours Degree in Health and Social Care has been developed with career progression and recognition by professional bodies in mind. The Edexcel Honours Degree in Health and Social Care underpins the National Occupational Standards in the health and social care sector at level 4.

Alongside the academic and practical aspects of the course, students will have opportunities to apply their knowledge in the workplace, either through work placement or through employment.

The Edexcel BTEC Level 5 HND in Health and Social Care forms the first two years of the programme and is followed by a one year, full-time top up to an Honours Degree, also awarded by Edexcel\*.

The course provides a specialist vocational programme, linked to professional requirements with core subjects in communicating in health and social care organisations, principles of health and social care practice, health and safety in the health and social care workplace, personal and professional development in health and social care and working in partnership in health and social care.

### Why choose Riverside for the Course?

- Outstanding teaching and learning within the department
- Outstanding added value on health and care courses
- Outstanding achievement across all BTEC programmes
- Extensive use of private, public and voluntary sector settings
- Strong links with employers enhance vocational experience

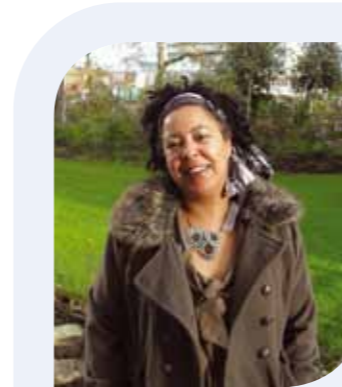
- Wide range of guest speakers who provide current, relevant and inspirational advice for careers progression
- Annual Care Conference held at Riverside College of Higher Education with prestigious and industry leading, key-note speakers
- Excellent breadth of post-graduate qualifications and sector experience within the teaching team
- Enhancement of employability skills and knowledge

### What are the entry requirements?

- Successful completion of a level 3 qualification e.g. National Award and/or A levels which meet a minimum level of 80 UCAS points
- Maths or English GCSE at Grade C (or equivalent)
- Candidates will be considered on an individual basis and those with work experience will be considered
- At least 200 hours work experience is also needed to complete the course

### What will this course lead on to?

Students completing this programme should expect to progress into careers within the community, hospitals, health centres, education and advice centres. Students wishing to become a social worker will be able to progress onto a Masters or Step Up to Social Work which is the professional qualification you need.



**From:** Widnes

Cleo, who is in the second year of her HE course at the School of Health and Social Care is a Learning Mentor for Just Teachers, and a Community Rep sitting on the Children's Trust Board, Policy and Performance Board for Children and Young People, the Employment and Learning Skills SSP and she is also the chair of Halton's Parent and Carers forum.

**Cleo said:** "For me overall what makes this College stand out is the expertise, experience and support that have been put into my course. The delivery and support from the tutors ensures that everyone can really achieve their full potential".

"This is the perfect degree to open up such a wide range of career pathways. The degree opens up new horizons, different ways of thinking, giving you a much wider perspective not only of your professional practise but also the world around you".

"This course has really opened up my aspirations, and I can really see all the opportunities in this sector and am thinking of setting up my own business."



## HNC HEALTH AND SOCIAL CARE

**Duration:** 2 years part time

**Location:** Kingsway Centre

### What is this course about?

The Edexcel HNC in Health and Social Care has been developed with career progression and recognition by professional bodies in mind.

The Edexcel HNC in Health and Social Care underpins the National Occupational Standards in the health and social care sector at level 4. Alongside the academic and practical aspects of the course, students will have opportunities to apply their knowledge in the workplace, either through work placement or through employment.

The course provides a specialist vocational programme, linked to professional requirements with core subjects in: communicating in health and social care organisations, principles of health and social care practice, health and safety in the health and social care workplace, personal and professional development in health and social care and working in partnership in health and social care.

### Why choose Riverside for the Course?

- Outstanding teaching and learning within the department
- Outstanding added value on health and care courses
- Outstanding achievement across all BTEC programmes
- Extensive use of private, public and voluntary sector settings
- Strong links with employers enhance vocational experience
- Wide range of guest speakers who provide current, relevant and inspirational advice for careers progression
- Annual Care Conference held at Riverside College of Higher Education with prestigious and industry leading, key-note speakers
- Excellent breadth of post-graduate qualifications and sector experience within teaching team
- Enhancement of employability skills and knowledge

### What are the entry requirements?

Full level 2 qualification e.g. BTEC Diploma or 5 GCSEs including Maths or English GCSE at grade C (or equivalent). Mature students with relevant commercial experience will be eligible.

### What will this course lead on to?

Students completing this programme should expect to progress into careers within the community, hospitals, health centres, education and advice centres. You can also apply for a HND or degree top up programme in Health and Social Care.



## FOUNDATION DIPLOMA IN COUNSELLING

**Duration:** 2 years part time

**Location:** Kingsway Centre

### What is this course about?

This qualification will provide in-depth professional training in counselling skills and theory with the opportunity to progress to an Hons Degree. It aims to provide a stimulating learning environment where students will develop a sound understanding of professional, legal and ethical issues. Increasing self-awareness and personal development are also an integral part of the course.

### What will I learn on this course?

Alongside the core theoretical models of Person-Centred, Psychodynamic and Cognitive Behavioural Therapy, you will have the opportunity to study several alternative aspects of counselling theory, these include: Solution Focused Brief Therapy, Transactional Analysis and Gestalt. You will examine professional issues in relation to working with clients and you will also develop skills in case formulation and working with mental health issues. You will be provided with the opportunity to practice counselling skills in a safe and facilitative environment. The personal development aspect of the course looks at developing an understanding of self and the group process.

### Why choose Riverside College for this course?

Staff have a wealth of counselling experience and come from a variety of therapeutic backgrounds. Each member of staff is committed to fully supporting your progress and successful achievement on this course.

### What are the Entry Requirements?

Level 3 Certificate in Counselling or relevant subject and GCSE English Language C or above or equivalent. Each candidate will formally apply for a place and if selected will be invited to attend an interview. The interview will focus upon personal qualities as well as the candidate's ability to meet the entry criteria. Successful applicants will be required to undergo an enhanced CRB check and provide two references (one from an academic source).

### What will this course lead on to?

On successful completion of this Foundation Degree you will have the opportunity to top up to a full Hons Degree.

## TUTOR PROFILE - ROSIE BYROM



### Senior Lecturer in Counselling

Rosie is currently studying towards her Professional Doctorate in Health and Social Care at Salford University. She achieved her Diploma in Counselling and Post Graduate Diploma in Teaching at Riverside College and then went on to do a Masters Degree in Counselling and Psychotherapy at Salford University as well as a Post Graduate Diploma in Child and Adolescent Psychotherapy.

Rosie said, "I believe in education and the power it has to change lives. I left school when I was 15 years old and worked in a sewing factory. I loved my first job, but always felt I wanted to do more with my life. I attended evening classes when my children were small and I studied whilst they slept. I never would have believed even two years ago that I would be starting a doctorate. I really hope that my story can inspire others to realise that it doesn't matter where you start from, you should never give up on your dreams."



## CENTRE OF SPORTING EXCELLENCE

### STAFF PROFILE - BEN BARTON



#### Head of Sporting Excellence

Ben is the Head of School for Sport & Public Services. As well as having 16 years worth of teaching experience at grade 1 Beacon Colleges, he also has a wealth of experience working with elite athletes at a variety of professional sports clubs. He has also played professional rugby league for Wigan Warriors and Huddersfield Giants.

## CENTRE OF SPORTING EXCELLENCE

If you choose to study at the Centre of Sporting Excellence, you will be choosing to join a course taught by outstanding professional sports teachers with exceptional experience both in the classroom and the professional sporting world.

The centre boasts exceptional links with sports clubs and professional bodies including the RFL, Liverpool Football Club and the Widnes Vikings to name a few.

#### The Centre of Sporting Excellence offers:

- Outstanding pass rates
- Top in the Country for added value in A level Sport
- Links with prestigious sporting clubs
- Exceptional teachers with professional sporting backgrounds

- A focus on athlete performance both academically and in their professional development
- Staff who will work with the relevant professional club and national governing body to maximise player and athlete performance within their chosen sport

#### External Partners:

- Liverpool Football Club
- The Rugby League
- Widnes Vikings
- The Rugby Football Union
- Liverpool Football Association
- Mersey Wheelchair Rugby League team



## STUDENT SUCCESSES



**Tara Stanley:** Plays Rugby for Halton Girls RLFC and is player of the year. She is also in the Liverpool Federation WFC County League merit Team, England's super 2, pathway to England and is ranked in the top 13 girls in England. Tara also represented England in the 2011 international games against France, Germany and the combined services.



**Danny Craven:** Danny was captain of the College's Rugby Academy and signed a professional contract with the Widnes Vikings in 2009. In his first year he was part of the under 18s, under 20s and the clubs first team. Danny is now part of the Vikings super league squad for 2012.



**Female Rugby Team:** Cronton Sixth Form Female Rugby League Team are North West College Champions!! The team were unbeaten in the 2010/2011 season.



**Jade Carr:** Jade Carr, Cronton Sixth Form sports student is a World Transplant Games Gold Medalist and has this year been nominated to carry the Olympic Torch between Bolton and Liverpool in 2012.

## BA HONS SPORT (COACHING AND SPORTS DEVELOPMENT)

**Duration:** 3 years full time

**Location:** Cronton Sixth Form College

### What is this course about?

Sports Coaching and Development is an important and rapidly expanding area of employment. On the BA (Hons) in Sport (Coaching and Development) the broad fields of sports studies are introduced and the policy and practice of sports development and coaching are examined, as well as other key industry areas.

Alongside the academic and practical aspects of the course, students will have opportunities to apply their knowledge and practical skills in the workplace, either through work placement or through employment. The Edexcel BTEC Level 5 HND in Sport (Coaching and Sports Development) forms the first two years of the programme and is followed by a one year full time top up to an Honours Degree.

The course is based at The Centre of Sporting Excellence at Cronton Sixth Form College which has outstanding indoor and outdoor sporting facilities and prestigious partnerships with professional clubs.

The course provides a specialist vocational programme, linked to professional requirements, with core subjects in sports coaching, the sport and leisure industry, sports development and specialist subjects such as physical education, sports training & fitness techniques and sports therapy amongst other topics.



### Why choose Riverside for this Course?

- Outstanding teaching and learning
- Outstanding added value for Sport courses.
- Our tutors all have experience of working in an elite performance environment.
- Excellent work experience opportunities
- We work very closely with our external partners to make sure you develop the skills employers want. Some of partners include Liverpool Football Club, The Rugby League, Widnes Vikings, The Rugby Football Union, Liverpool Football Association and Mersey Wheelchair Rugby League team.

### What are the entry requirements?

- Successful completion of a level 3 qualification e.g. National Award and/or A levels which meet a minimum level of 80 UCAS points.
- Maths or English GCSE at Grade C (or equivalent)
- Mature candidates will also be considered on an individual basis

### What will this course lead on to?

This course will prepare students for employment in a range of occupations including Sports Development, Sports Management, Sports Coaching, Strength & Conditioning Coaching, Sports Therapy and PE Teaching.

## STAFF PROFILE - IAIN DOUGLAS



### Programme Area Leader for Sport and Head of HE Sport

Iain is the Programme Area Leader for Sport and has been Head Coach of the Centre of Sporting Excellence Football team for the last 3 years. One of Iain's current roles at the college is teaching Liverpool Football Club Scholars who attend the college two days a week. Iain has a wealth of teaching experience and as an outstanding teacher he holds the role of Subject Learning Coach for Sport. Prior to teaching he played for Halton, Cheshire County and Wrexham Football Club.





## SCHOOL OF TEACHER EDUCATION

### STAFF PROFILE - HELEN LONDON



Qualified to post graduate level in Management and Subject Learning Coaching, Helen began her academic career teaching Business Studies. After a successful secondment working nationally on the Government's Success for All, Teaching and Learning Change Programme, Helen returned to Riverside College to lead cutting edge curriculum developments in Teacher Education.

Hugely passionate about teaching and learning, Helen is now Programme Area Leader for Teacher Education, working within a team of dedicated and supportive professionals who put quality teaching and learning at the very heart of what they do.

## SCHOOL OF TEACHER EDUCATION

By joining the School of Teacher Education at Riverside College of Higher Education, you will be joining courses taught by specialists who have been nationally recognised in the sector by leading educational quality organisations and education experts.

And that's not all, not only do experts recognise the excellent practice of the department, students also comment on the innovative approach, friendly and supportive staff.

The School of Teacher Education offers three professional qualifications, Preparing to Teach in the Lifelong Learning Sector at level four, certificate in Teaching in the Lifelong Learning Sector, and the Diploma in Teaching in the Lifelong Learning Sector at level five.



### The School of Teacher Education offers:

- 'Teacher Education is Outstanding' Ofsted.
- 100% pass rate on DTLLS 2011
- Be taught by grade 1 teachers who have Advanced Learning Coach status
- Nationally recognised in the sector for innovative approaches to Continual Professional Development
- Invited to share best practice at national LSIS (Learning Skills Improvement Service) Annual Conference
- Recognition from the Institute for Learning Chief Executive
- Recognised by Frank Coffield, Emeritus Professor of Education at the Institute of Education, and accomplished writer on educational theory and practice

### Student Comments

- "Course exceeded expectations"
- "Creative and innovative approach to teaching and learning"
- "Exceptionally supportive"
- "My tutors help, guidance and patience have been amazing and I will recommend this course to all my colleagues"
- "I feel that the course has given me a wealth of information, skills, resources and knowledge that I will find invaluable in my future teaching"
- "Loved every minute of it"

### STUDENT PROFILES

**Name: Michael Roche** "The course has inflamed my passion for teaching and my subject. I have gained confidence in teaching and in my management skills".

**Name: Alison Heath** "This course was beyond my expectations. Excellent teaching! Support is always there. Peers are supportive".

**Name: Isobel Dohoney** "I feel that I have developed immensely over the two years. I have gained in confidence and ability as a direct result of everything I have experienced on the DTLLS course"

## PREPARING TO TEACH IN THE LIFELONG LEARNING SECTOR (LEVEL 3/4)

**Duration:** 1 term part time

**Location:** Kingsway Centre

### What is this course about?

This qualification will introduce you to teaching in the Lifelong Learning Sector and will help you to develop some important practical teaching skills. It is ideal for those who are already qualified in their intended teaching subject and who currently work at or who want to work as:

- teachers in the Lifelong Learning Sector,
- technicians and support staff in further and adult education.

### It is a qualification for anybody who:

- would like or require an introduction to teaching in the Lifelong Learning Sector or
- is seeking career progression within their area of work or
- will be/are seeking to progress towards ATLS/QTLS status and/or
- teaches on a one-to-one and/or group basis
- teaches non publicly funded courses
- is a trainer in industry

The Preparing to Teach in the Lifelong Learning Sector qualification is a 6 credit qualification delivered at Level 4 and is a first step towards official practitioner status.

### What will I learn on this course?

An Award in Preparing to Teach in the Lifelong Learning Sector covers the basics of teaching in continuing and adult education - including how to plan sessions, motivate learners and use a variety of assessment methods.

As part of this programme, you learn about the roles, responsibilities and boundaries as a teacher, current legislative requirements and codes of practice, equality and diversity and ways to promote inclusion. You will also learn about how to establish ground rules with your learners, as well as the importance of assessment, record keeping and functional skills.

### Why choose Riverside College for this course?

We have highly experienced, knowledgeable and friendly staff who offer a friendly, supportive and inclusive learning environment. We have an excellent success rate and many of our learners have gone on to teach in the Lifelong Learning Sector.

The college offers learning support for learners who require extra help with their course studies.

### What are the Entry Requirements?

GCSE Grade C in English Language (or equivalent)

### What will this course lead on to?

Successful completion of this course will provide a progression route onto the Certificate in Teaching in the Lifelong Learning Sector programme (CTLLS) or the Diploma in Teaching in the Lifelong Learning Sector (DTLLS) and the opportunity to work in an 'associate' or 'full' teaching role in the Lifelong Learning Sector.



## CERTIFICATE IN TEACHING IN THE LIFELONG LEARNING SECTOR (LEVEL 4)

**Duration:** 5 months part time

**Location:** Kingsway Centre

### What is this course about?

The Level 4 Certificate in Teaching in the Lifelong Learning Sector (CTLLS) will enable you to develop some important teaching skills. This course is for Pre-service or In-service Teachers or Associate Teachers, and is aimed at candidates who:

- are deemed to be in an Associate Teacher role or
- are seeking career progression within their area of work and
- have access to 30 teaching practice hours (whether pre-service or in-service, paid or unpaid)

The Certificate in Teaching in the Lifelong Learning Sector is a 36 credit course delivered at Level 4 and aimed towards teachers who have already achieved the Preparing to Teach in the Lifelong Learning Sector (PTLLS) qualification. It is the next stage for those working in an "associate teacher" role (paid or unpaid) and who wish to work towards achieving ATLS professional status.

In an "associate" teaching role you may be a part-time teacher and as a result have fewer responsibilities. You will be teaching in at least one of the following ways:

- from pre-prepared materials.
- On a one-to-one basis.
- On a programme aimed at one level/one type of learner.
- On short courses.

It is ideal for those who are already qualified in their intended teaching subject and who currently work at or who want to work as teachers in the Lifelong Learning Sector and technicians and support staff in further and adult education.

### What will I learn on this course?

You will study 3 units:

- Delivering Lifelong Learning
- Assessing Learners in the Lifelong Learning Sector
- Optional Unit

### Why choose Riverside College for this course?

We have highly experienced, knowledgeable and friendly staff who offer a friendly, supportive and inclusive learning environment. We have an excellent success rate.

The college offers learning support for learners who require extra help with their course studies.

### How will I be assessed?

As part of this programme, you will be required to complete 3 theory assignments.

The practical assessment of teaching will require a minimum of 30 hours paid or unpaid teaching practice with 3 formal observations (one of which is undertaken by a subject specific mentor).

There is no examination on this course but please note that all assignments must be word processed.

### What are the Entry Requirements?

Successful completion of a Preparing to Teach in the Lifelong Learning Sector programme (PTLLS), a Level 3 qualification in your subject area (ie the subject you wish to teach), GCSE Grade C in English Language (or equivalent), CRB enhanced disclosure clearance.

### What will this course lead on to?

Successful completion of this course will provide a progression route onto the Diploma in Teaching in the Lifelong Learning Sector (DTLLS). Progression onto the diploma is dependent upon a change of role from 'Associate' to 'Full' teaching role. The DTLLS is the next stage for those deemed to be in a "full" role and who wish to work towards achieving QTLS professional status.

A 'full' teaching role is one with wider responsibilities, including using materials you have designed yourself, teaching across a range of levels, learners or types and contributing to a range of programmes of varying lengths.

## DIPLOMA IN TEACHING IN THE LIFELONG LEARNING SECTOR (LEVEL 5)

**Duration:** 2 years part time

**Location:** Kingsway Centre

### What is this course about?

The Diploma in Teaching in the Lifelong Learning Sector is required for teachers who work in the Lifelong Learning Sector in a "full" teaching role.

A 'full' teaching role is one with wider responsibilities, including using materials you have designed yourself, teaching across a range of levels, learners or types and contributing to a range of programmes of varying lengths.

This course will be run on a part-time basis studying 4 hours per week and is validated by Staffordshire University.

### What will I learn on this course?

In Year 1 you will study 5 units (60 credits at Level 4):

- Preparation to Teach in the Lifelong Learning Sector
- Planning and Enabling Learning
- Enabling Learning and Assessment
- Theories and Principles for Planning and Enabling Learning
- Option Unit.

In Year 2 you will study 4 units (60 credits at Level 5):

- Continuing Personal and Professional Development
- Curriculum Design for Inclusive Practice
- Wider Professional Practice
- Option Unit.

### Why choose Riverside College for this course?

We have highly experienced, knowledgeable and friendly staff who offer a friendly, supportive and inclusive learning environment. We have an excellent success rate on this programme. The college offers learning support for learners who require extra help with their course studies.

### What are the Entry Requirements?

Entry is dependent upon:

- a Level 3 qualification in your subject area (ie the subject you wish to teach),
- GCSE Grade C in English Language (or equivalent),
- Evidence that you have achieved or are working towards GCSE Grade C (or equivalent) in Maths
- CRB enhanced disclosure clearance.
- Access to subject specific mentor support.

In addition, the Diploma in Teaching in the Lifelong Learning Sector has a mandatory teaching practice requirement of 150 hours. Whilst paid employment in a teaching role is not a requirement of the Diploma, all teachers must complete the required teaching practice in a "full" teaching role.

If you are not in paid employment, you should make your own suitable arrangements for gaining teaching practice in the Lifelong Learning Sector.

A limited number of teaching placements will also be available at Riverside College.

### What will this course lead on to?

Upon completion, successful learners can undertake a period of professional formation (via the Institute for Learning) leading to the achievement of Qualified Teaching and Learning Status (QTLS). In addition, they can also progress onto a BEd Hons in Post Compulsory Education at Staffordshire University.



## STAFF PROFILE - JULIE BELLFIELD



### Personal Tutor, Diploma in Teaching in the Lifelong Learning Sector Year 2

Julie is the Teaching, Learning and Development Officer at Riverside College and is responsible for promoting effective teaching and learning strategies with colleagues across the college. Julie has also worked extensively as part of the cross college Teaching, Learning and Standards team, always with a focus on raising standards in teaching and learning.

Julie started her teaching career in Business Administration and IT in making the transition into teaching across all of the Initial Teacher Training programmes in 2007. She is passionate about developing new teachers to become inspirational practitioners.

## GETTING TO COLLEGE

**At Riverside College we work with the local bus providers to ensure that your journey to college is a smooth one by providing you with:**

- A subsidised bus pass
- Easy weekly payments
- Bus passes that you can use in the evenings and at weekends
- Dedicated bus services throughout the region

The following is a summary of the routes that you could take to college, by bus or train. These details were correct at the time of going to print but for more up to date details and times and stops and information on our student bus passes please go to our website.

If you would like to see public transport timetables go to [www.halton.gov.uk](http://www.halton.gov.uk) and for a personalised travel plan call the Neighbourhood Travel Team on 0800 1953 173.

### KINGSWAY CAMPUS:

Our Kingsway Campus is situated close to Widnes Town Centre near Victoria Square.

#### BY BUS:

All bus services serving Widnes stop nearby the Kingsway Campus - either across the road or outside the Asda Supermarket.

We also have dedicated College buses running:

- Anthony's Travel bus number 1: From Ellesmere Port, Helsby, Frodsham and Runcorn
- Halton Transport number 41: From Windmill Hill, via Runcorn East, Beechwood, Clifton Road and many stops between
- Halton Transport number 43: Starting at Moore, Sandymoor, Castlefields, Grangeway, Runcorn High Street and many stops between
- Halton Transport number 44: from Wavertree, via Netherley, Halewood, Hough Green Farm and many stops between

- Halton Transport number 45: Starting at Garston, via Woolton, Speke, Halte and many stops between.
- NEW Halton Transport number 46: From Knowsley, starting at Stockbridge Village, going via Huyton and many stops between

#### BY RAIL:

The Kingsway Campus is a ten minute walk south along Kingsway from Widnes Station on the Liverpool to Warrington line. (For further information on train times and fares please call the National Rail Enquiry Line on 08457 48 49 50.)

#### BY CAR:

##### FROM M62

- Exit the M62 at junction 7
- Take the A557 following signs for Widnes
- At the traffic lights follow signs for Widnes Town Centre
- Take the 2nd exit at roundabout, following signs for Riverside College Kingsway.

##### FROM M56

- Exit the M56 at junction 12
- Take the Weston Point Expressway A557 follow signs for The Bridge
- Take the 2nd slip road signposted Widnes, follow signs for Riverside College Kingsway.



**Kingsway Campus** - Kingsway, Widnes WA8 7QQ

### CRONTON SIXTH FORM COLLEGE:

Cronton Sixth Form College is situated on the A5080 Cronton Lane between the villages of Cronton and Farnworth.

#### BY BUS FROM:

##### WIDNES

Catch any of the following Halton Transport services that either stop at the campus or nearby in Birchfield Road.

##### HUYTON

From Huyton catch the 6 (Arriva) Liverpool to Warrington that stops at the College or the 61 (Halton Transport) Liverpool-Huyton-Prescot-Whiston-Rainhill-Widnes service) that stops at Birchfield Road.

##### WHISTON, PRESCOT, RAINHILL

Catch the 61 (Halton Transport) Liverpool-Huyton-Prescot-Whiston-Rainhill-Widnes service) that stops at Birchfield Gardens.

##### ST HELENS

Catch the 17A (Halton Transport) or 33A (Arriva) service to Farnworth/Birchfield Gardens.

##### WARRINGTON, GREAT SANKEY, PENKETH

Catch the 6 Arriva Warrington to Liverpool service that stops at the Cronton Campus.

##### RUNCORN

Catch the 61 or 61C (Halton Transport) Runcorn to Widnes and Cronton Campus service.

##### HALE, DITTON, HOUGH GREEN

Catch the 40 (Halton Transport) Hale-Ditton-Hough Green-Cronton Campus service.

##### ELLEMERE PORT, HELSBY, FRODSHAM

Catch our Anthonys Travel bus from Ellesmere Port (starting at Rossmore Road) -Sutton Way-Elton-Helsby-Frodsham-Cronton Campus.

### LIVERPOOL

Catch the 44 (Halton Transport) from Wavertree-Netherley-Hough Green-Cronton Campus. Or the 45 (Halton Transport) from Garston-Allerton-Woolton-Speke-Cronton Campus.

Catch the 6 (Arriva) Liverpool-Edge Lane-Broadgreen-Roby-Huyton-Cronton Campus service.

#### BY RAIL:

The Cronton Campus is a ten minute walk from Widnes Station on the Liverpool to Warrington line. (For further information on train times and fares please call the National Rail Enquiry Line on 08457 48 49 50.)

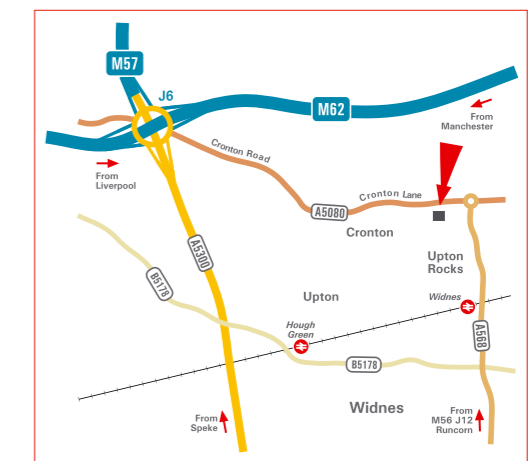
#### BY CAR:

##### FROM M62

- Exit the M62 at junction 6
- At the roundabout join the A5080 towards Cronton
- Straight ahead at the traffic lights, Riverside College is on the right.

##### FROM M56

- Exit the M56 at junction 12
- Take the A557 following signs for The Bridge
- Take the 2nd slip road signposted Widnes, follow signs for Riverside College Kingsway
- Continue up Kingsway until roundabout, take 1st exit and follow signs for Riverside College Cronton.



**Cronton Campus** Cronton Lane, Widnes WA8 5WA

# RIVERSIDE COLLEGE OF HIGHER EDUCATION

**Riverside  
College**  
Widnes & Runcorn

WWW.RIVERSIDE.AC.UK



STAY LOCAL GO FAR

TEL: 0151 257 2035

EMAIL: [INFO@RIVERSIDECOLLEGE.AC.UK](mailto:INFO@RIVERSIDECOLLEGE.AC.UK)

IF YOU WOULD LIKE A COPY OF THIS DOCUMENT IN LARGE FORMAT OR BRAILLE, PLEASE CALL 0151 257 2800