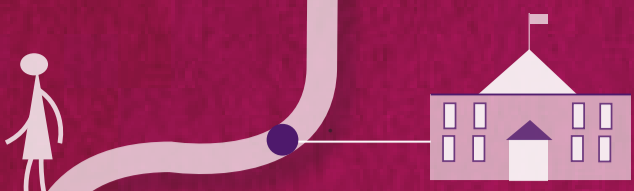
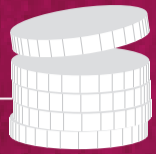


Advanced Learner Loan LEARNER JOURNEY

BEFORE YOUR COURSE



You decide what course you want to study and what college or learning provider you want to study at.



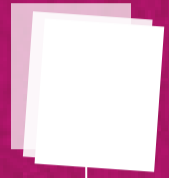
You find out if you're eligible for an Advanced Learner Loan at www.gov.uk/advancedlearnerloan



Your college or learning provider will give you a 'Learning and funding information' letter. You'll need this to complete your application for an Advanced Learner Loan.



Register and apply online. It's quick and easy at www.gov.uk/advancedlearnerloan



Send any evidence we ask for as quickly as possible to avoid delays in processing your application.



We'll send you a letter confirming your loan.

DURING YOUR COURSE



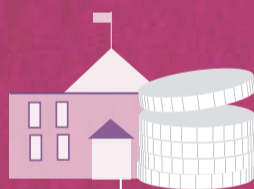
Start your course.



Your college or learning provider tells us you've started your course.



We'll pay the loan for your fees directly to your college or learning provider each month.



%

Interest is applied from the day we make your first payment.

AFTER YOUR COURSE

Repayments will start the April after you finish or leave your course, but only when you're earning over a certain amount.



How much interest you're charged will depend on your income.



If your income drops below the repayment threshold your repayments will stop.

%

Your loan will be cancelled 30 years after you're due to start repaying.

~~30~~